

PARKSIDE AT MARTIN DOWNS PLAT No. 70

PARCEL 31A at MARTIN DOWNS

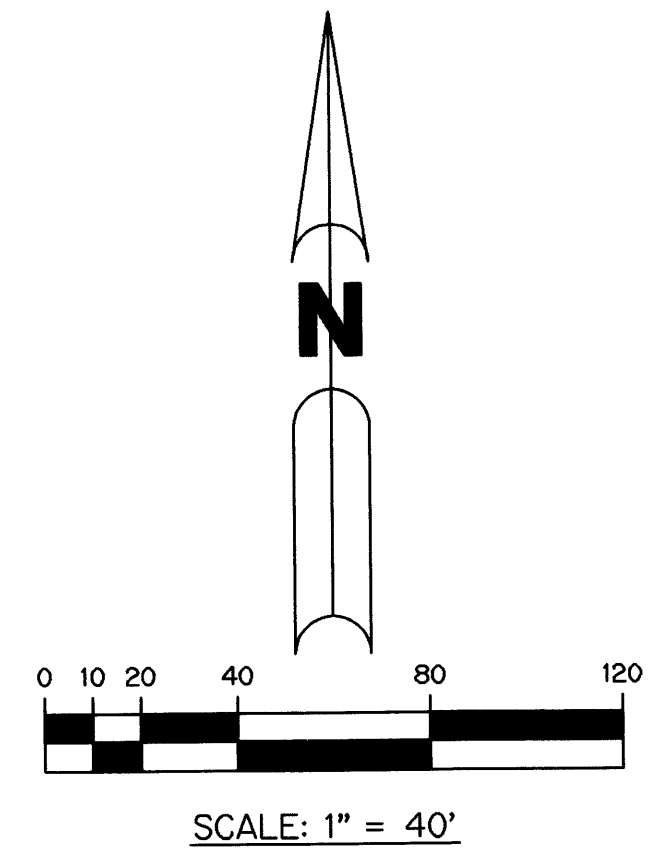
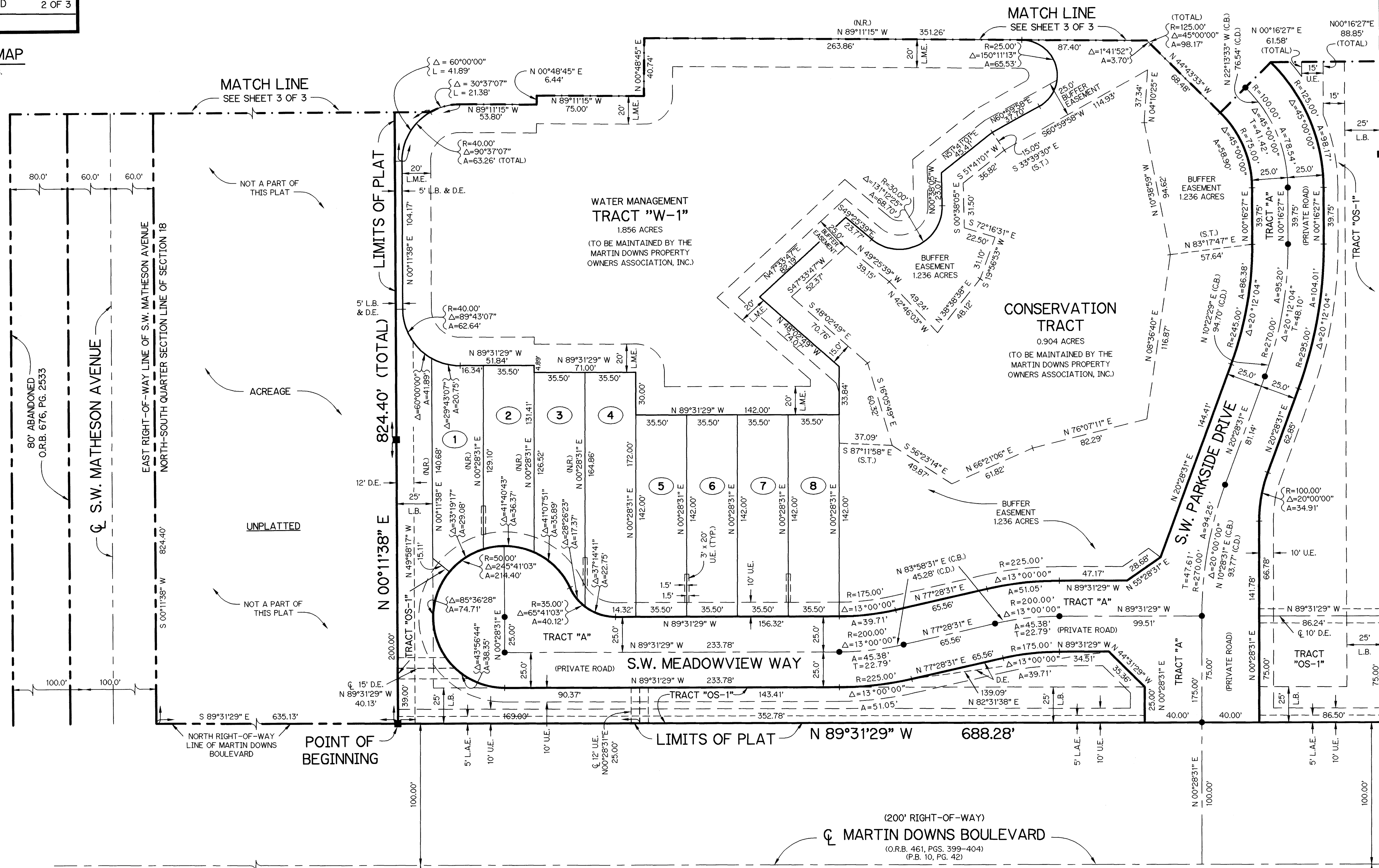
A PARCEL OF LAND LYING IN SECTION 18, TOWNSHIP 38 SOUTH, RANGE 41 EAST,
MARTIN COUNTY, FLORIDA

SHEET 2 OF 3 FEBRUARY, 1995

KEY MAP
N.T.S.

MAPLEWOOD
(P.B. 9, PG. 43)

LOT 14



CLEVELAND 2ND ADDITION
(P.B. 11, PG. 63)
PALM BCH. (NOW MARTIN) COUNTY

- LEGEND:**
- - PERMANENT REFERENCE MONUMENT, PLS #3864
 - - PERMANENT CONTROL POINT, PLS #3864
 - Δ - DELTA ANGLE
 - R - RADIUS
 - A - ARC LENGTH
 - T - TANGENT LENGTH
 - C.B. - CHORD BEARING
 - C.D. - CHORD DISTANCE
 - D.E. - DRAINAGE EASEMENT
 - L.A.E. - LIMITED ACCESS EASEMENT
 - L.B. - LANDSCAPE BUFFER
 - L.M.E. - LAKE MAINTENANCE EASEMENT
 - N.R. - NOT RADIAL
 - N.T.S. - NOT TO SCALE
 - O.R.B. - OFFICIAL RECORD BOOK
 - P.B. - PLAT BOOK
 - PGS. - PAGES
 - P.L.S. - PROFESSIONAL LAND SURVEYOR
 - P.R.M. - PERMANENT REFERENCE MONUMENT
 - S.T. - SURVEY TIE
 - TYP. - TYPICAL
 - U.E. - UTILITY EASEMENT

NOTES

1. ALL LOT LINES ARE NON-RADIAL UNLESS OTHERWISE SHOWN.
2. THERE SHALL BE NO BUILDING OR ANY OTHER KIND OF CONSTRUCTION OR TREES OR SHRUBS PLACED ON DRAINAGE EASEMENTS.
3. THERE SHALL BE NO BUILDING OR OTHER PERMANENT STRUCTURES OR TREES OR SHRUBS PLACED ON UTILITY EASEMENTS.
4. BEARING BASE - THE NORTH RIGHT-OF-WAY LINE OF MARTIN DOWNS BOULEVARD IS TAKEN AS BEING NORTH 89°31'29" WEST AND ALL OTHER BEARINGS ARE RELATIVE THERETO.
5. NOTICE: THERE MAY BE ADDITIONAL RESTRICTIONS THAT ARE NOT RECORDED ON THIS PLAT THAT MAY BE FOUND IN THE PUBLIC RECORDS OF MARTIN COUNTY.

THIS INSTRUMENT PREPARED BY
MICHAEL T. KOLODZIEJCZYK P.L.S. 3864 STATE OF FLORIDA
LAWSON, NOBLE AND ASSOCIATES, INC.
ENGINEERS PLANNERS SURVEYORS
PORT ST. LUCIE, FLORIDA